

For a traditional, personal and professional service

64 Felpham Road, Felpham, Bognor Regis, West Sussex PO22 7NZ



Score	Energy rating	Current	Potential
92+	A		
81-91	B		
69-80	C	77 C	79 C
55-68	D		
39-54	E		
21-38	F		
1-20	G		



(for more photographs go to www.maysagents.co.uk)

£149,950 Leasehold

11 Gateway Lodge Felpham Road
Felpham, Bognor Regis, PO22 7NS

www.maysagents.co.uk



These particulars are believed to be correct but their accuracy is not guaranteed. They do not form part of any contract.
 Mays The Village Agent Ltd. Company Number 7930877. Registered in Cardiff. Registered Office: 93 Aldwick Road, Bognor Regis PO21 2NW

Felpham, on the sunny Sussex coast, is renowned for many attributes. Numbered amongst these are the short lived residency of William Blake, who reputedly penned the words to Jerusalem whilst living here, and of course the proximity to the safe bathing waters of the Beach itself. But for some another attraction is the village centre development of retirement flats known as **GATEWAY LODGE**, which have become a haven for the older generation looking for security in retirement. This particular example is located on the **FIRST FLOOR** (with a stair lift), the property benefits from both gas fired central heating and uPVC framed double glazing, **replacement kitchen and shower room**, there is also an estate manager, backed up by 24 hour monitoring should you ever need it. For an appointment to view contact **May's** - this could be your chance to retire to the village !!

Directions: From May's village centre office the development will be seen almost opposite. The entrance to the property will be found within the centre of the flats, through the archway.

ACCOMMODATION

ENTRANCE LOBBY:

with uPVC framed double glazed stained glass panelled door; easy rise staircase with stair lift to:

LANDING:

With door to:

INNER HALL:

with entry phone system; trap hatch to roof space, door to:

LIVING ROOM: 18' 7" x 12' 8" (5.66m x 3.86m)

narrowing in DINING RECESS to 8'10., with two radiators; central security alarm system; t.v. aerial point; telephone point; electric fire and surround; door to:

KITCHEN: 10' 6" x 6' 7" (3.20m x 2.01m)

(maximum measurements over units) range of drawer and cupboard units with worktop splash back and wall mounted cabinets over; inset stainless steel sink; automatic washing machine; oven with gas hob; fridge/freezer; radiator; wall mounted gas fired boiler..

BEDROOM 1: 13' 6" x 9' 0" (4.11m x 2.74m)

the former to face of double fitted wardrobe cupboard; radiator.

BEDROOM 2: 12' 4" x 7' 0" (3.76m x 2.13m)

Radiator; airing cupboard housing lagged hot water cylinder with fitted immersion heater and slatted shelving plus additional storage space.

SHOWER/ W.C.

Fully tiled glazed cubicle with electric shower; pedestal wash basin; low level W.C. with concealed cistern; tiled walls; radiator; extractor fan; alarm cord.

OUTSIDE AND GENERAL

GARDENS

The development is surrounded, and surrounds, gardens combining areas of lawn with flower and shrub beds plus meandering pathways providing access to central seating.

PARKING

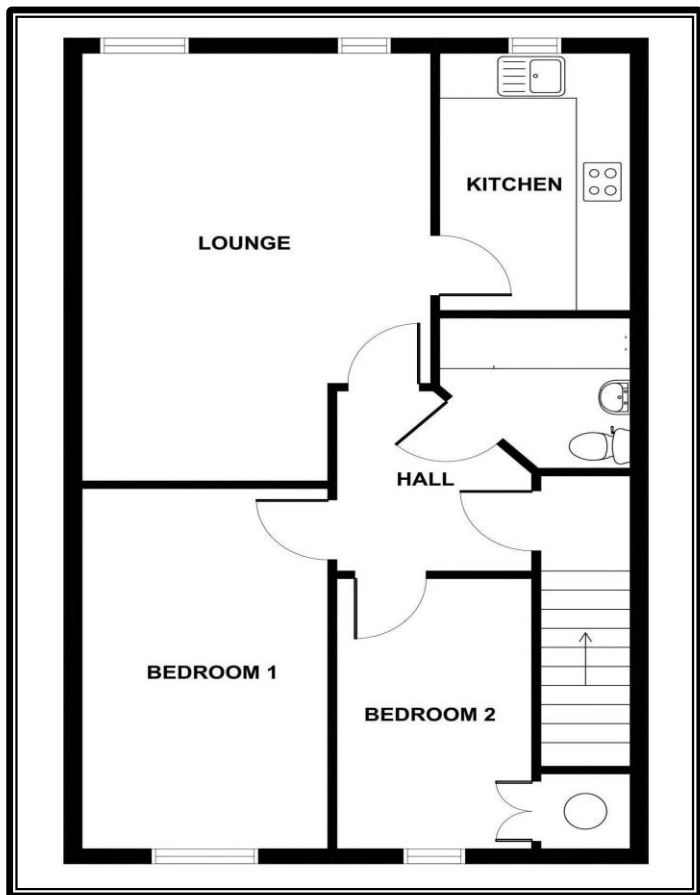
There are a number of parking spaces available on a "first come first served" basis. Visitor's parking is available in the adjacent public car park.

TENURE:

Balance of some 89 years remaining from 125 year lease from 1986.

SERVICE CHARGE:

Service Charge £225.14 Per Month To include: Maintenance of Communal Gardens, Buildings Insurance, Water Charges, External Decoration, Provision of Estate Manager and Accommodation. Reviewed annually.



The mention of any appliance and/or services in these sales particulars does not imply that they are in full and efficient working order or that they have been tested.